

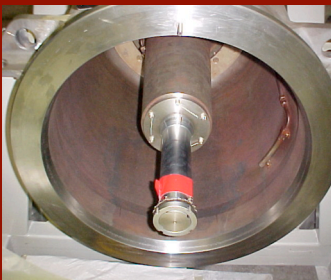
CASE STUDY

Grayloc Seal Area Repairs

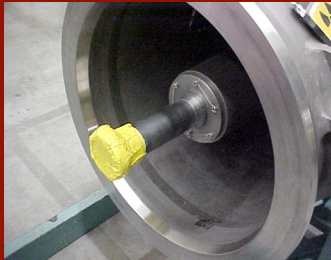
Canadian Metal-ad Corporation can repair scoring, galling or fretting damages on all sizes of Grayloc seal areas. Successful repairs of 30" seal areas on FM housing are done without the need of an expensive and difficult machining setup, while still maintaining the original sizes and tolerances.



Simple and mobile set-up means that the repairs can be done anywhere.

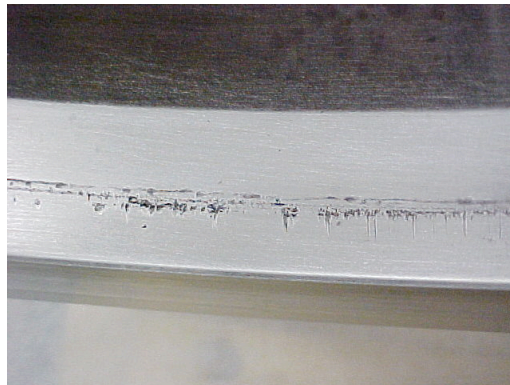


Grayloc seal area damage on FM housings is historically up to .007" in depth.

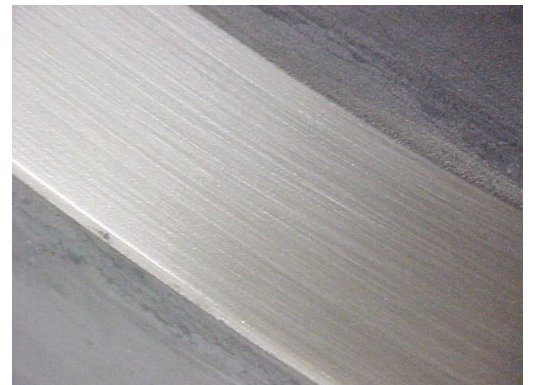


Repair tested positive and in fact exceeded the original surface finish and sealing pressure specs.

DEEP PITTING DAMAGE ON THE GRAYLOC SEAL AREA CAUSED UNACCEPTABLE LEAK RATE LEVELS



DAMAGES ARE FILLED WITH NICKEL THEN POLISHED AND BLENDED TO ORIGINAL SIZE AND TOLERANCE



After living several years with minor leaking problems on a Fueling Machine at Pickering OPG in Ontario, the problem became much worse. With unacceptable leakage levels the decision was made to overhaul the unit. Engineers concluded that the pits in the sealing surface were too deep to simply rebuild the unit using a new seal ring only. CMC was asked to provide a repair procedure to fill the pitting while still maintaining the original size and tolerance. The procedure was accepted and the Brush Plating process was used.

The work was done on-site and with minimal set-up or tooling. The repair was so successful that it is now part of the overhaul task package. Since then, more than 2 dozen Grayloc seal areas have been repaired at OPG using our procedure.

Researching and developing methods for successfully and consistently achieving our excellent adhesive bond have been a primary focus of Canadian Metal-ad Corporation. Not only does the process require top materials and sound equipment; it must have the full attention of a skilled operator with many years of experience. CMC has a high level of in-house training and is practiced only by the best technicians, earning CMC its reputation for quality workmanship. Our Brush Plating process can be applied on virtually any metallic substrate capable of conducting a current. Although the technician must treat each type of metal on an individual basis, the same superior level of bonding will ultimately be reached.



**CANADIAN METAL-AD
CORPORATION**

140 Advance Blvd. Unit 2
Brampton, On. Canada L6T 4Z8
Phone: 905-459-6457, Fax: 905-459-6457
www.metalad.ca; info@metalad.ca